

SOIL GENESIS AS AFFECTED BY  
TOPOGRAPHY AND DEPTH OF  
SALINE AND SODIC GROUND WATER  
UNDER SEMIARID CONDITIONS OF  
IRAN

ALI ABTAHI<sup>1</sup>

Department of Soil Science, College of Agriculture,  
Shiraz University, Shiraz, Iran.

(Received July 8, 1988)

ABSTRACT

Soils of the Maharlu, Kamal-Abad, Sayf-Abad and Chartaghi soil series, all calcareous developed in the Sarvestan intermontane basin under similar climatic and parent material conditions but with different topography and depth to saline and sodic ground water, were investigated. Marked differences in the morphological, physical, chemical and mineralogical properties of the four soils were associated with variation in topography and the depth of saline and sodic ground water. Soils with salic horizons (Aquollic Salorthids) have been formed on the lowlands with shallow ground water, soils with gypsic horizons (Salic Gypsiorthids) on alluvial plains with moderately deep ground water, soils with natric horizons (Typic Natrixeralfs) on the lower piedmont plains with deep ground water, and soils with argillic horizons (Calcic Haploxeralfs) on the upper piedmont plains with very deep ground water. Exchangeable Na, the major cause of clay dispersion and migration, is only effective whenever the excess salts have been leached out. Salination and alkalization, desalination, solonization and dealkalization are four successive processes in the formation of these soils.

X-ray and electron optical analyses indicated that palygorskite increases with decrease of smectite towards the upper part of the intermontane basin.

---

<sup>1</sup>Associate Professor.

## تحقیقات کشا ورزی ایران

۸:۱-۲۱ (۱۳۶۸)

تا شیرپستی و بلندی و عمق سفره آب زیرزمینی شور و قلیا در تشکیل خاک  
در تحت شرایط نیمه خشک ایران

علی ابطحی

دانشیار بخش خاکشناسی دانشکده کشاورزی دانشگاه شیراز

### چکیده

خاکهای سری مها رلو، کمال آباد، سیف آباد و دوچا رطایی تمام آهکی تشکیل شده در حوضه سروستان در تحت شرایط آب و هوایی و مواد مادری مشابه ولستی پستی و بلندی و عمق سفره آب زیرزمینی شور و قلیا مختلف مورد مطالعه قرار گرفت. اختلافات عمده در مورفولوژی، خواص فیزیکی، شیمیایی و مینرالوژیکی چهار سری خاک بستگی کامل به تغییرات پستی و بلندی و عمق سفره آب زیرزمینی شور و قلیا دارد.

خاکهای با افق سالییک (اکوالیک سال اورتید) در اراضی پست با سفره آب زیرزمینی کم عمق، خاکهای با افق جیپسیک (جیپسیک زرواکرپت) در دشت های رسوبی با سفره آب زیرزمینی نسبتا عمیق، خاکهای با افق ناتریپیک (تیپیک ناتری زرال ف) در دشت های دامنه ای پایین با سفره آب زیرزمینی عمیق و خاکهای با افق آر جیلیک (کلسیک ها پل زرال ف) در دشت های دامنه ای بالایی با سفره آب زیرزمینی خیلی عمیق تشکیل شده اند. سدیم قابل تبادل بعنوان عامل اصلی در پراکندگی و انتقال رس وقتی موثر است که نمکهای اضافی از خاک خارج شوند. شور و قلیا شدن، شوره زدایی، پیداشدن حالت سولونتری و قلیا زدایی چهار مرحله متوالی در تشکیل خاک بحساب می آیند. آزمایشات اشعه ایکس و میکروسکوپ الکترونی نشان داد که در نقاط مرتفع تر حوضه با افزایش رس پالی گورسکیت رس اسمکتیک کاهش می یابد.

### INTRODUCTION

The Sarvestan basin, which is a typical intermontane basin, lies in southern Iran, about 50 km east of Shiraz (Fig. 1). This basin is 80 to 90 km long in a northwest to southeast direction, and 10 to 15 km wide in a north to south direction. The altitude of the basin varies from 1,400 m above mean sea level near the lake surface to 1,800 m above mean sea level at the foot of the mountains. The climate is Mediterranean with an average annual precipitation of 332 mm. The highest and lowest mean monthly temperatures (1950-1974) are 28.4 and 6.2°C for July and January, respectively. Most of the soils, therefore have a xeric moisture regime and the soil temperature can be classified as thermic (7).



Fig. 1. Location of study area in Iran.

The Sarvestan basin (Fig. 2) is formed by tectonic movements of the Zagros mountain ranges during Mio-Pliocene time (21). During the Quaternary period, thick lacustrine materials were deposited in the central part of the basin. The area surrounding the lake is composed of alluvial-colluvial deposits. Towards the lake these become thinner and are replaced by lacustrine deposits. As a result of these depositional patterns, several physiographic units may be defined on the basis of salinity status: lowlands and alluvial plains with severe to very severe salinity influenced by lacustrine conditions (No. 3 on Fig. 2), piedmont plains having a uniform fine texture with slight salinity, influenced by semilacustrine conditions (No. 2 on Fig. 2); alluvial fans, alluvial-colluvial fans, upper terraces and fan erosional remnants with no salinity problem at the outer margin (No. 1 on Fig. 2).

The native vegetation of the area consists of many species and their distribution follows a zonation controlled by topography and depth of ground water. The most important plant associations are: a) on shallow non-saline soils and fans, the association of *Artemisia* sp.,

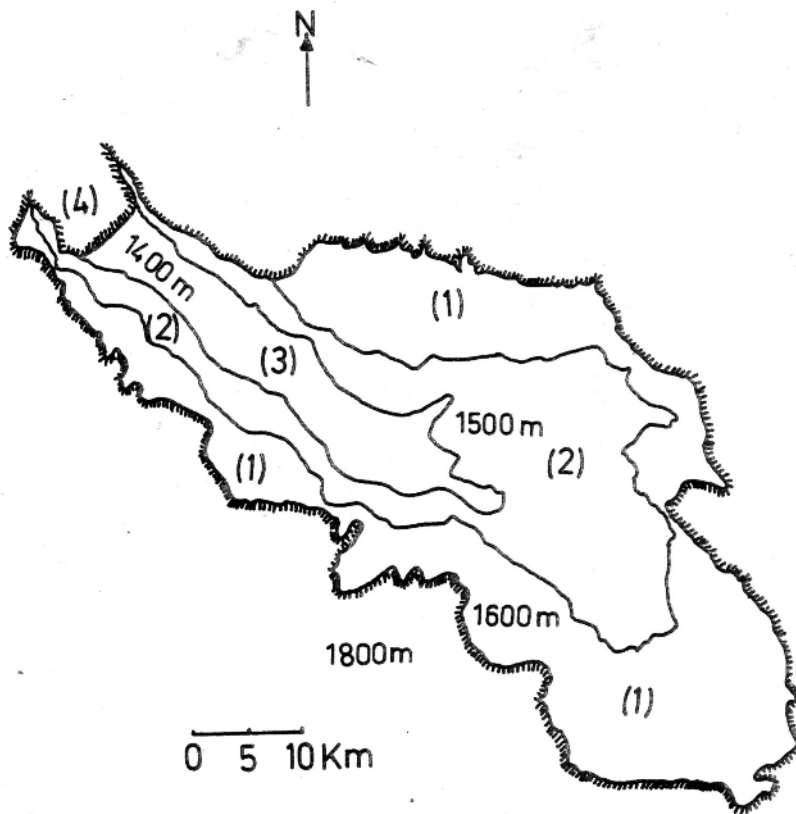


Fig. 2. Soil salinity and landform relationships in Sarvestan basin. (Abtahi, 1978).

- (1) Land with no salinity problem (alluvial-colluvial fans, alluvial fans, upper terraces, and fan erosional remnants).
- (2) Land with slight to moderate salinity problem (piedmont plains).
- (3) Land with severe to very severe salinity problem (alluvial plain and lowland).
- (4) Salt lake.

*Zygophyllum atriplicoides*, *Peganum harmala* and some *Gramineae*; and b) in very saline alluvial plains, the association of *Salsola* sp., *Salicornia herbacea*, *Suaeda* sp. and *Tamarix* sp. In extremely saline lowlands where water tables are near or almost at the surface, even highly tolerant halophytes cannot grow.

The parent materials of soils are variably textured and highly calcareous, being derived from surrounding limestone mountains.

Two evolutionary sequences of soil formation are proposed for this synclinal basin: one with respect to topography and time (topochronosequence) with none to moderate salinity problems under well-drained conditions on the flanks of the basin, and another with severe to very severe salinity problems under the influence of saline ground water at various depths in the central part of the basin. In this paper, attention was directed mainly to soil formation as affected by topography and depth of saline and sodic ground water of the central part of the basin. The evolution of salt-affected soils have been studied by several workers (1, 5, 13, 14, 23, 25, 26). Soil formation under the well-drained conditions of the surrounding of the basin has been discussed in another paper (3).

#### MATERIALS AND METHODS

The soils were described and classified according to the USDA, Soil Survey Manual (35) and Soil Taxonomy (36), respectively (Table 1).

Samples of water for quality determination were collected during the end of spring either directly from each study site or from surrounding wells.

Particle-size analysis of soil samples was determined by the hydrometer method after gypsum and other soluble salts were removed from samples

Table 1. Some morphological characteristics and classification of the soils studied.

Horizon	Depth, cm	Munsell color (moist)	Texture <sup>†</sup>	Structure <sup>†</sup>	Consistence <sup>†</sup>	Boundary	Other components <sup>‡</sup>
STAGE I: SALINITION AND ALKALIZATION							
Lowland/Marshy soils (Aquatic Salinithids)							
C1sa	0-10	2.5Y5/3	cl	flgr	mfr	c	Very saline
C2sa	10-55	2.5Y5/3	cl	flsbk	mfr	c	Very saline; and mottles of 5Y6/3 and 2.5Y5/6
C3sa	55-70	10Y5/3	c	flsbk	mfr	c	Very saline; sp mottles of 2.5Y5/3
C4sa	70-100	5Y5/2	cl	m	mfr	-	Very saline
STAGE II: UESALINITION							
Alluvial plain, Kamal-Ahad series (Salic Gypsirothids)							
A1	0-20	7.5YR/4	s(s)cl	f2gr	mfr	cs	Very few fine roots
C1cs	20-55	7.5YR/4	scl-1	cbak	mfi	gs	Gypiferous; saline; common gypsum crystals
C2cs	55-90	7.5YR/4	cl	m2sbk	mfi	gs	Gypiferous; saline; common gypsum crystals
C3sa	90-140	7.5YR5/4	s(1)	m1sbk	mfi	gs	Very saline; few gypsum mycelia
C4sa	>140	7.5YR5/4	cl	m	mfi	-	Very saline
STAGE III: SOLONCHATION							
Lower piedmont plain, Sayr-Ahad series (Typic Natrisolts)							
A2	0-15	10YR5/4	s(s)c	f2sbk	mfr	cs	Common fine roots
B21c	15-35	10YR/4	c	m3pr:m2cp <sup>§</sup>	mfi	gw	Few roots; few broken thin clay skins on the ped faces
B22c	35-70	5Y5/3	c	m3pr:cbak <sup>§</sup>	mfi	gw	Continuous; thin clay skins on the ped faces
B3c	70-90	5Y5/3	c	m3sbk	mfi	cs	Broken, thin clay skins on the ped faces
C1cs	90-140	5Y6/2	c	m	mfi	cs	Few gypsum crystals and mycelia
C2	140	5Y5/2	c	m	mfi	-	-
STAGE IV: DESALINIZATION							
Upper piedmont plain, Charzagh series (Calc. Natrisolts)							
A2	0-30	7.5YR/4	cl-s(s)cl	m2gr	mfr	cs	Common fine roots
B21c	0-45	7.5YR/4	s(s)c	m3sbk	mfr	gs	Broken, moderately thick clay skins on the ped faces; common rounded powdery carbonate nodules
B22c	45-65	7.5YR/4/3	s(s)c	m3sbk	mfr	d	Continuous; thick clay skins on the ped faces; common rounded powdery carbonate nodules
C1c	65-135	5. YR4.5/4	cl	m	mfi	-	Gypiferous; many gypsum crystals

<sup>†</sup>Synchs used according to abbreviation given in Soil Survey Manual, USDA Handbook no. 18, p. 139-140, 1951.

<sup>‡</sup>All soils are calcareous throughout.

<sup>§</sup>Indicates primary structure that parts to secondary structure when ruptured.

by repeated washing with distilled water (10). The soil pH, EC and soluble ions were measured on saturated paste extracts (37). Gypsum and alkaline earth carbonates were also determined (37). Organic carbon in the soil was measured by wet oxidation method of Walkley and Black (19). Cation exchange capacity (CEC) was determined by 1M NaOA° (pH=8.2) for soil samples and 1M NH<sub>4</sub>OA° (pH=7) for clay fraction (12).

Water-dispersible clay was determined on untreated samples of soil and clay. To find the degree of dispersion of clay under natural conditions, the soils were dispersed in distilled water without addition of any dispersing agent. After required period of time, the amount of clay was determined and assumed to be equal to dispersed clay under natural conditions.

Removal of chemical cementing agents and separation of different size fractions for mineralogical analyses were done according to the methods of Kittrick and Hope (24) and Jackson (20), respectively. Free iron oxides were removed from clay sample by the citrate-dithionite method (30). The treated clay was dried on glass slides and examined by X-ray diffraction, by using Ni-filtered CuK $\alpha$  radiation, a range factor of 400 cps and a time constant of 1s. X-ray diffractograms were obtained from Mg-saturated soil clays both before and after glycerol solvation. Potassium saturated samples were X-rayed after drying at room temperature and after heating at 550°C for 2 hr.

Electron micrographs of citrate-dithionite treated clays were obtained with a Phillips SM 300 electron microscope following the technique of Bates (8).

The electron micrographs and 10.7 Å° peak of the X-ray diffractograms were used for the semi-quantitative determination of palygorskite (1). Four randomly selected 35,000X photographs (8 by 8 cm) were used with a transparent 5-mm grid to

estimate the palygorskite content of each sample by point counting. Since no feldspars were observed in the clay fraction, the percentage of illite were estimated from the total K<sub>2</sub>O content of the clay (20).

Vermiculite in the clay fraction was determined quantitatively by the method of Alexiades and Jackson (6). Quantification of other minerals such as smectite, chlorite and quartz was estimated from their relative peak intensities using the glycerol treated samples (22).

#### RESULTS AND DISCUSSION

The two main factors influenced by topography, namely the depth of ground water and the degree of salinity of ground water, are responsible for genesis of soils of the studied area. Maharlu, Kamal-Abad, and Chartaghi soils formed an evolutionary sequence of soils developed under the influence of a saline ground water with high SAR values (Tables 1 and 2). The different members of the toposequence may be grouped according to specific processes of soil development. Four processes in the formation of these soils could be recognized.

##### Maharlu Soil Series

Salination and alkalization in this series have resulted in soils that can be classified as Salorthid according to Soil Survey Staff (36). Ground water is extremely saline (75 dSm<sup>-1</sup>) and has a very high SAR value of 124 (Table 3). During the rainy winter due to rising of ground water, the soils are flooded with saline and sodic ground water, while during summer intensive evaporation takes place (2). The result is a high concentration of Na and other salts throughout the profile (Tables 1 and 2). The main soil forming processes are, therefore, salination and alkalization. In spite of the high ESP values for the Maharlu pedon,



Table 2. Some physical and chemical characteristics of the soils studied.

Horizon	Depth cm	EC $\text{d}\text{m}^{-1}$	pH (paste)	Water dispersible clay		Organic matter	$\text{CaCO}_3$	Gypsum	particle-size distribution			CEC			
				of soil	of total clay				silt	clay	Texture	Soil meq $100\text{g}^{-1}$	Clay ESP		
STAGE I: SALINITION AND ALKALIZATION															
Lowland, Maharliq series (Aquollic Salorthids)															
C1sa	0-10	112	7.7	3.0	8.8	1.5	35	5	26	40	34	cl	19.5	65.4	64
C2sa	10-55	89	7.6	3.0	7.8	1.3	35	10	34	28	38	cl	24.0	66.4	58
C3sa	55-70	105	7.7	2.8	5.8	1.0	39	8	22	30	48	c	19.5	57.6	57
C4sa	70-100	123	7.5	4.4	12.9	1.2	43	6	26	40	34	cl	15.0	55.6	68
STAGE II: DESALINATION															
Alluvial plain, Kamal-Abad series (Salic Gypsiorthids)															
A1	0-20	08	7.6	3.0	10.7	1.0	33	0.3	16	56	28	sic1	25.0	46.4	5
C1cs	20-55	27	8.4	6.3	26.2	0.3	23	23.0	48	28	24	sc1-1	13.4	44.0	38
C2cs	55-90	44	8.5	7.4	21.9	0.2	35	10.3	26	40	34	cl	14.6	37.8	41
C3sa	90-140	108	8.3	5.0	19.1	0.3	41	5.5	20	54	26	s11	10.0	36.8	67
C4sa	140	78	8.1	5.5	18.3	0.2	43	4.0	24	46	30	cl	10.0	50.0	58
STAGE III: SOLONIZATION															
Lower piedmont plain, Sayf-Abad series (Typic Haploxeralfs)															
A2	0-16	04	7.7	2.0	4.6	1.7	34	0.1	14	43	43	sic	18.6	34.0	5
B21t	16-36	03	7.9	2.0	3.8	1.6	32	0.2	13	35	52	c	20.6	38.7	4
B22t	36-70	07	9.5	38.2	67.0	1.4	33	-0.1	12	31	57	c	21.1	36.8	35
B3t	70-90	13	8.9	34.7	61.0	0.9	37	1.0	14	29	57	c	21.1	38.0	28
C1cs	90-140	12	8.5	33.0	59	0.8	37	5.0	16	28	56	c	16.0	40.1	21
C2	> 140	17	8.3	30.2	55	0.6	36	0.1	15	30	55	c	20.1	45.0	40
STAGE IV: DESALINATION															
Upper piedmont plain, Chertaghi series (Calcic Haploxeralfs)															
A2	0-30	01	8.0	5.0	17.0	0.7	44	0.1	20	50	30	cl-stic1	14	34.2	2
B21t	30-45	01	8.1	0.7	1.7	0.3	47	1.4	14	42	44	sic	13	32.8	2
B22t	45-65	02	8.0	0.9	1.7	0.3	45	0.4	6	42	52	sic	16	34.2	5
T1c	65-135	05	8.0	12.6	38	0.2	29	22.0	38	28	34	cl	17	43.2	6

Table 3. Chemical composition of ground water from representative physiographic areas.

Physiography	Anions and cations									
	EC	pH	HCO <sub>3</sub>	Cl	SO <sub>4</sub>	Ca	Mg	Na	SAR	
	DSM <sup>-1</sup> ----- meq l <sup>-1</sup> -----									
Lowland	76	8.3	1	1280	310	50	170	1300	124	
Alluvial plain	87	7.3	3	800	205	50	120	800	86	
Lower Piedmont Plain	7.2	7.5	4	48	42	25	35	38	7	
Upper Piedmont plain	8.8	7.8	3	55	28	24	31	30	6	

the pH and the amount of water-dispersible clay are low throughout the profile, mainly due to the presence of excess soluble salts (Table 2). Although the Na content of the soil profile is high, due to the presence of high amount of salt, the Maharlu series does not show any field evidence of clay migration. Gypsum in the profile of Maharlu series (Table 2) might be pedogenic and accumulated by capillary water.

#### Kamal-Abad Soil Series

In the alluvial plains, approximately 2 m higher than the lowlands, the depth of water table is 2 to 3 m for the most of the year and the first effect on soil formation is a substantial leaching of the salts from the upper part of the profile (Tables 1 and 2).

The desalination is associated with a partial dealkalization and formation of a gypsic horizon. However, at this stage enough salts are still present to prevent the action of Na on clay dispersion. At a further stage of desalination, clay dispersion becomes evident and a third stage is reached.

#### Sayf-Abad Soil Series

In the lower piedmont plains, auger sampling from the depth of soil profile showed that the water table is deeper than 3 m, therefore, desalination is more pronounced (Tables 1, 2 and 3) and hydrolysis of the Na clay complex causes the pH to be 9.5 or higher. The dispersion of the clay leads to clay migration which is a basic requirement of the formation of natric and argillic horizons. The amount of water-dispersible clay is greater than 85% of the total clay.

The data of Table 2 suggest that exchangeable Na, which is a major cause of clay dispersion and migration (1, 4), becomes more effective at dispersion when the excess salt in the soil

---

solution has been leached. Clay migration apparently formed the continuous clay skins observable in the field (Table 1). The high concentration of water-dispersible clay (Table 2) shows that clay migration is still active. Dispersibility of clay is probably affected by the same factors as swelling of clay. Rowell *et al.* (34) have listed these factors as the type of clay, the concentration and composition of the electrolyte, and the presence of other materials in association with clay such as iron and aluminum.

#### Chartaghi Soil Series

In the higher parts of the piedmont plains where ground water is deeper and no longer influences the soil-forming process, the Chartaghi soils developed. In this series due to Ca from dissolution of carbonates, Ca is the major cation in exchange sites, therefore, pH and ESP values are lower than the values in Sayf-Abad soils. The soil CaCO<sub>3</sub> likely acts as a continuous reservoir for maintaining a low but steady concentration of soluble Ca ions necessary for replacing exchangeable Na of the natric horizon of the Sayf-Abad series to the argillic horizon of the Chartaghi series. The released Na likely leached away, if there was ever any, from the soil profile by precipitation during winters. The low water-dispersible clay content of the Chartaghi series might be due to this ameliorative process.

The dealcalization process corresponds to the steppification of the solonetz (steppified Solonetz) of Kovda *et al.* (25).

#### Evaluation of Clay Mineralogy

Analysis of clay fraction from each subsurface horizon of the four representative soils of the study sequence revealed that similar minerals were present, but they differed in their abundance (Fig. 3 and Table 4).

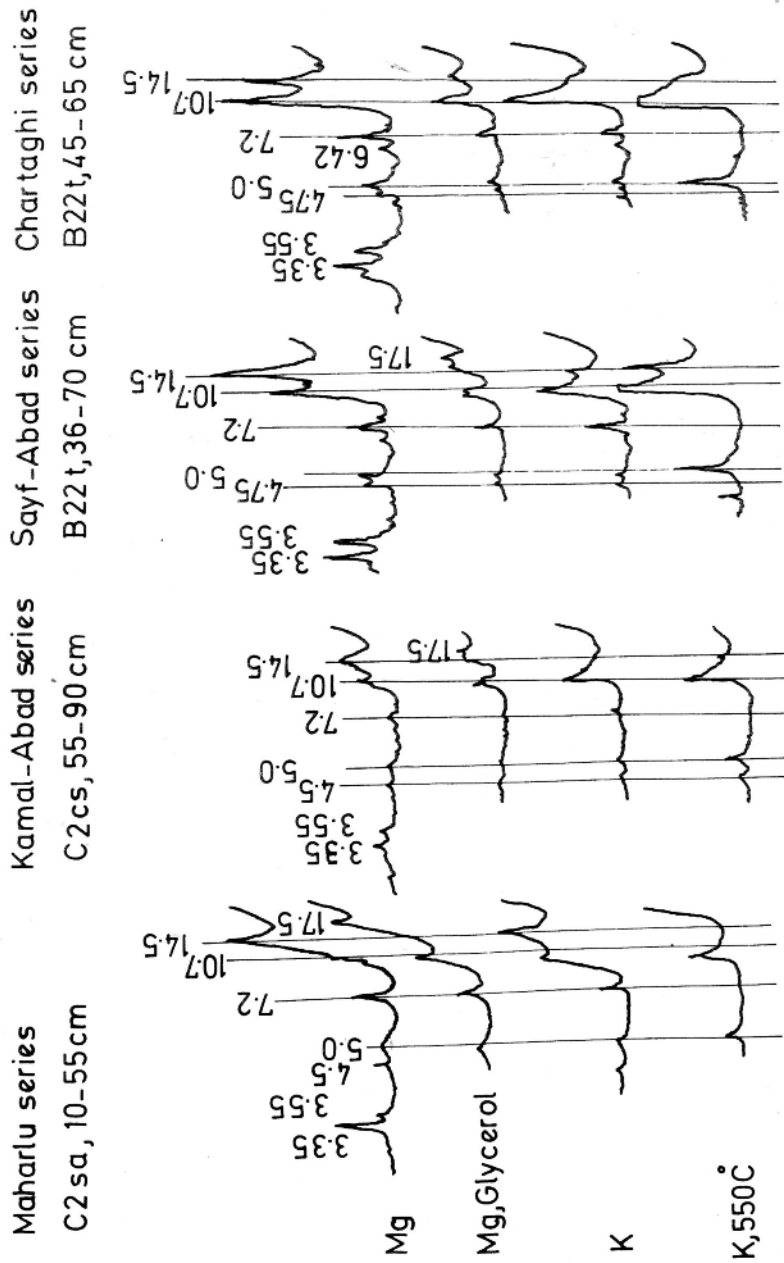


Fig. 3 X-ray diffraction pattern of clay from subsurface horizons of Maharlu, Kamal-Abad, Sayf-Abad and Chartaghi series. (d-values are in Å).

Table 4. Semi-quantitative analysis of the soil clays.

Horizon	Depth cm	Polygonskite	Smectite	Illite	Chlorite	Vermiculite	Quartz
STAGE I : SALINATION AND ALKALIZATION							
<u>Lowland/Marathi series(Aquolic Salorthids)</u>							
C1sa	0-10	++	+++	++	+	N	+
C2sa	10-55	++	+++	++	+	N	+
C3sa	55-70	++	+++	++	+	N	+
C4sa	70-100	+	+++	++	+	N	+
STAGE II : DESALINATION							
<u>Alluvial plain, Kama] Abad series (Sodic Gypsiorthids)</u>							
A1	0-20	+++	+++	+++	++	N	+
C1cs	20-55	+++	+++	++	++	N	+
C2cs	55-90	+++	+++	++	++	N	+
C3sa	90-140	+++	+++	++	++	N	+
C4sa	> 140	+++	+++	++	+	N	+
STAGE III: SOLONCHALIZATION							
<u>Lower piedmont plain,SaV]Fahad series(Tropic Natricxeralfs)</u>							
A2	0-16	+++	+	++	++	N	+
B21c	16-36	+++	+++	++	++	N	+
B22t	36-70	+++	+++	++	++	N	+
B3t	70-90	+++	+++	++	++	N	+
C1cs	90-140	++	+++	++	++	N	+
C2	> 140	++	+++	++	++	N	+
STAGE IV : DEALKALIZATION							
<u>Upper piedmont plain,Ch]r]taht] series(Calcic Haploxeralfs)</u>							
A2	0-30	+++	++	++	+	N	+
B21c	30-45	+++	++	++	+	N	+
B22t	45-55	+++	++	++	+	N	+
11c	65-135	+++	+++	++	+	N	+

\* ++++ = 50% , +++ = 25-50% , ++ = 10-25% , + = 10% , None detected.

The patterns of Mg-treated, glycerol-solvated specimens (Fig. 3) show the presence of illite, smectite, Fe-chlorite, palygorskite, quartz and trace of vermiculite. In addition to a 10.7 Å peak in X-ray diffractograms, the electron micrography of the Fe-free clay samples confirmed the presence of varying amounts of palygorskite type of clay minerals in all samples (Fig. 4). In Salorthids of the lowlands area (Maharlu) the palygorskite content is <25%. Where a natric horizon is present (Sayf-Abad) the palygorskite content is between 25-50%, and where an argillic horizon (Chartaghi), it increases to 50% or more (Fig. 4). This difference could be attributed to the change in depth to saline and sodic ground water and degree of salt accumulation resulting from variation in topography.

According to Henderson and Robertson (16), and Martin Vivaldi and Robertson (28), the limestone of southern Iran contains only minor amounts of palygorskite and smectite. It has also been stated that the same parent rocks include equal amounts of illite, chlorite and quartz (11). Therefore, it may be concluded that the presence of a large quantity of palygorskite or smectite in soils could be due to pedogenic processes. Soil solution moderately rich in silica, Ca, and Mg, may favor the formation of palygorskite and smectite (32), which have similar chemical compositions but different structures. Alkaline and alkaline-earth elements such as those needed for this neoformation may be from the weathering of limestone and dolomitic limestone. Si is fairly ubiquitous in primary and secondary minerals and will also be present as dissolved  $\text{Si(OH)}_4$  in the ground water. According to Wiersma (38) part of the necessary  $\text{SiO}_2$  originates from finely distributed silica present in the limestone. Smectite, which is present only in trace amount in parent rocks, probably forms in the soil from chlorite. Formation of smectite from illite and chlorite has been reported under conditions similar to those of the Sarvestan basin (11, 33). Since smectite is not stable in highly saline and

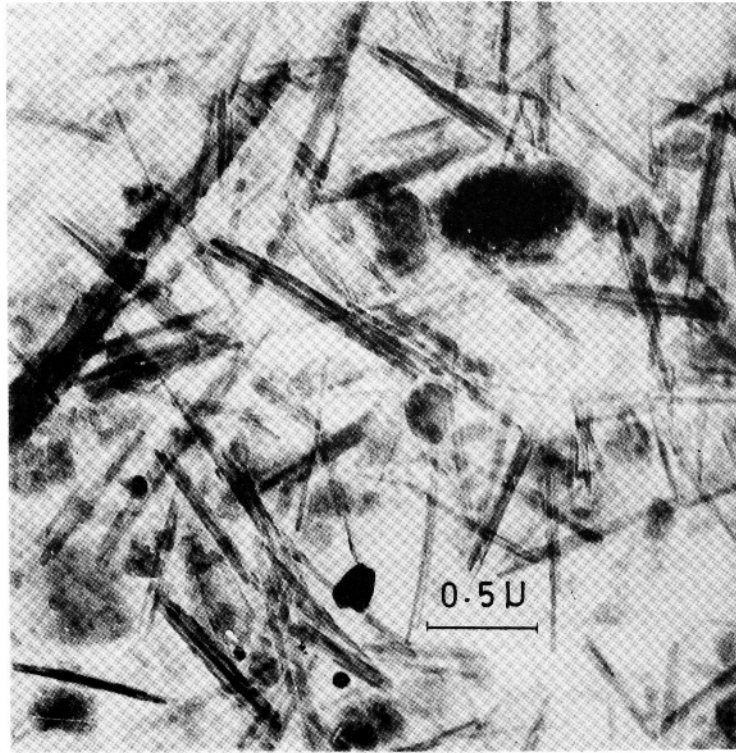


Fig. 4. Electron micrograph (35,000 X) of clay of the Chartaghi series (B22t, 45-65 cm) showing the presence of fibrous (palygorskite) and platy clay minerals.



alkaline conditions (15, 18), therefore, the high amount of smectite minerals in the lowland area (Table 4) is supposed to have been formed outside of the present-day lowland surface, under the influence of fresh water circulation. This mineral under sustained influence of very high salinity and alkalinity gradually decomposes and palygorskite neofoms from decomposition products. The palygorskite present in the area may be of two origins: neofomation from the reaction of Mg and silica present in ground water (27, 29, 31) or diagenetic formation from smectite (9, 17, 38, 39). A decrease in the cation exchange capacity of the clay fraction (Table 2) likely reflects the changes in the clay mineralogy within the sequence (Fig. 3 and Table 4). Therefore, it may be concluded that, as a result of variation in depth to saline and sodic ground water and degree of salt accumulation, resulting from variations in topography, palygorskite increases as smectite decreases. In the lowland area with high smectite and low palygorskite the CEC is high (86.4 meq 100<sup>-1</sup> g clay) while in the lower piedmont plains with deep ground water and soils with argillic horizon that have low smectite and a high palygorskite contents, the CEC drops to rather low values (34.2 meq 100<sup>-1</sup> g clay) as the CEC of palygorskite is low.

#### LITERATURE CITED

1. Abtahi, A. 1977. Effect of a saline and alkaline ground water on soil genesis in semiarid southern Iran. *Soil Sci. Soc. Amer. J.* 41:583-588.
2. Abtahi, A. 1978. Soil and ground water salinity and their relation to physiography. *Iran. J. Agric. Res.* 6:21-32.
3. Abtahi, A. 1980. Soil genesis as affected by topography and time in highly calcareous parent materials under semiarid conditions in Iran. *Soil Sci. Soc. Amer. J.* 44:329-336.

4. Abtahi, A. 1985. Genesis, physico-chemical, and morphological characteristics of a highly saline-sodic soil after reclamation at the Ahoo-Char station in semiarid southern Iran. Iran Agric. Res. 4:57-69.
5. Afanasiev, J.N. 1927. The classification problem in Russian soil science. Acad. Sci. U.S.S.R. Russ. Pedol. 5. Leningrad. 50 p.
6. Alexiades, C.A. and M.L. Jackson. 1965. Quantitative determination of vermiculite in soils. Soil Sci. Soc. Amer. Proc. 29:522-527.
7. Banai, M.H. 1977. Soil moisture and temperature regime map of Iran. Soil Institute of Iran, Ministry of Agric. and Rural Develop. 17 p.
8. Bates, T.F. 1958. Selected electron micrographs of clays and other fine-grained minerals. Penn. State Univ., Mineral Indus. Exp. Sta.: Circ. 51. 61 p.
9. Bonatti, E. and O. Joensuu. 1960. Palygorskite from Atlantic deep sea sediments. Amer. Miner. 53:975-983.
10. Bouyoucus, C.J. 1951. A recalibration of the hydrometer method for making mechanical analysis of soils. Agron. J. 43:434-438.
11. Burnett, A.D., P.G. Fookes and R.H.S. Robertson. 1972. An engineering soil at Kermanshah, Zagros Mountains, Iran. Clay Miner. 9:329-343.
12. Chapman, H.D. 1965. Cation exchange capacity. In: C.A. Black (ed.). Methods of Soil Analysis. Part 2. Agronomy. Amer. Soc. Agron., Madison, Wisconsin, U.S.A. 9:891-900.
13. De Sigmond, A.J. 1932. Hungarian alkali soils

---

and methods of reclamation. Suppl. Bur. Soil Sci. Tech. Commun. 23 p.

14. Givi, J. and A. Abtahi. 1985. Soil genetics as affected by topography and depth of saline and alkali ground water under semiarid conditions in southern Iran. Iran Agric. Res. 4:11-27.
15. Haden, W.L. 1963. Attapulgite: Properties and use. Clay Clay Miner. 10:284-290.
16. Henderson, S.G. and R.H.S. Robertson 1958. A mineralogical reconnaissance in western Iran. Resource Use, Ltd., Glasgow, England.
17. Heystek, H. and E.R. Schmidt. 1954. The mineralogy of the attapulgite-montmorillonite deposit in the Springbok Flats, Transvaal. Trans. Geol. Soc. S., Afr. 56:99-119.
18. Hess P.C. 1966. Phase equilibria of some minerals in the  $K_2O-Na_2O-Al_2O_3-SiO_2-H_2O$  system at 25°C and 1 atmosphere. Amer. J. Sci. 264:289-309.
19. Jackson, M.L. 1967. Soil Chemical Analysis. Prentice Hall, Inc., Englewood Cliff, N.J. U.S.A. 498 p.
20. Jackson, J.L. 1975. Soil chemical analysis-advanced course. Univ. of Wisconsin, College of Agric., Dept. of Soils, Madison, Wis., U.S.A. 894 p.
21. James, G.A. and J.G. Wynd. 1965. Stratigraphic nomenclature of Iranian Oil Consortium. Amer. Assoc. Pet. Geol. Bull. 49:2182-2245.
22. Johns, W.D. and R.E. Grim. 1954. Quantitative estimation of clay minerals by diffraction methods. J. Sediment. Petrol. 24:242-251.

- 
23. Kelley, W.P. 1951. Alkali soils, their formation, properties, and reclamation. Reinhold Publishing Corp., New York. 176 p.
  24. Kittrick, J.A. and E.W. Hope. 1963. A procedure for the particle size separation of soils for X-ray diffraction analysis. Soil Sci. 96:312-325.
  25. Kovda, V.A., C. Van Den Berg and R.M. Hagan (eds.). 1973. International Source Book on Irrigation, Drainage, and Salinity. FAO-UNESCO, Paris, France. 510 p.
  26. Magistad, O.C. 1945. Plant growth relations on saline and alkali soils. Bot. Rev. 11:181-230.
  27. Martin Vivaldi, J.L. and J.L. Gonzalez. 1961. A random intergrowth of sepiolite and attapulgite. Clays Clay Miner. 9:592-602.
  28. Martin Vivaldi, J.L. and R.H.S. Robertson. 1971. Palygorskite and sepiolite (the hormite). In: J.A. Gard (ed.). The Electron-optical Investigation of Clays. The Mineralogical Society, London, England.
  29. McLean, S.A., B.L. Allen and J.R. Craig. 1972. The occurrence of sepiolite and attapulgite on the Southern High Plains. Clays Clay Miner. 20:143-149.
  30. Mehra, O.P. and M.L. Jackson. 1960. Iron oxide removal from soils and clays by a dithionite citrate system buffered with sodium bicarbonate. Clay Clay Minerals. 7:317-327.
  31. Millot, G. 1962. Crystalline neoformation of clays and silica. In: Proc. Symp. Basic. Sci., Some Recent Advances in France and United States, N.Y., U.S.A. 180-191.
  32. Millot, G. 1970. Geology of Clays. Masson et Cie., Paris, France. 429 p.

- 
33. Parry, W.T. and C.C. Reeves. 1968. Clay mineralogy of Pluvial lake sediments, Southern High Plains, Texas. *J. Sediment Petrol.* 38:516-529.
  34. Rowell, D.L., D. Rayne and N. Ahmad. 1969. Effect of the concentration and movement of solutions on the swelling dispersion and movement of clay in saline and alkaline soils. *J. Soil Sci.* 20:176-188.
  35. Soil Survey Staff. 1951. Soil Survey Manual. Handb. No. 18, SCS-US Government Printing Office, USDA, Washington D.C., U.S.A. 503 p.
  36. Soil Survey Staff. 1975. Soil Taxonomy: A basic system of soil classification for making and interpreting soil surveys. Agric. Handb. No. 436. USDA, U.S. Government Printing Office, Washington D.C., U.S.A. 754 p.
  37. U.S. Salinity Laboratory Staff. 1954. Diagnosis and Improvement of Saline and Alkali Soils. USDA, Handb. No. 60, U.S. Government Printing Office, Washington D.C. U.S.A. 169 p.
  38. Wiersma, J. 1970. Provenance, genesis and paleogeographic implications of microminerals occurring in sedimentary rocks of the Jordan Valley area. Ph.D. Thesis, Univ. of Amsterdam, The Netherlands.
  39. Yaalon, D.H. 1955. Clay and some non-carbonate minerals in limestone and associated soils of Israel. *Bull. Res. Council. Israel.* 5B, 2 sec. B, pp. 161-173.